

SPACE PLAN

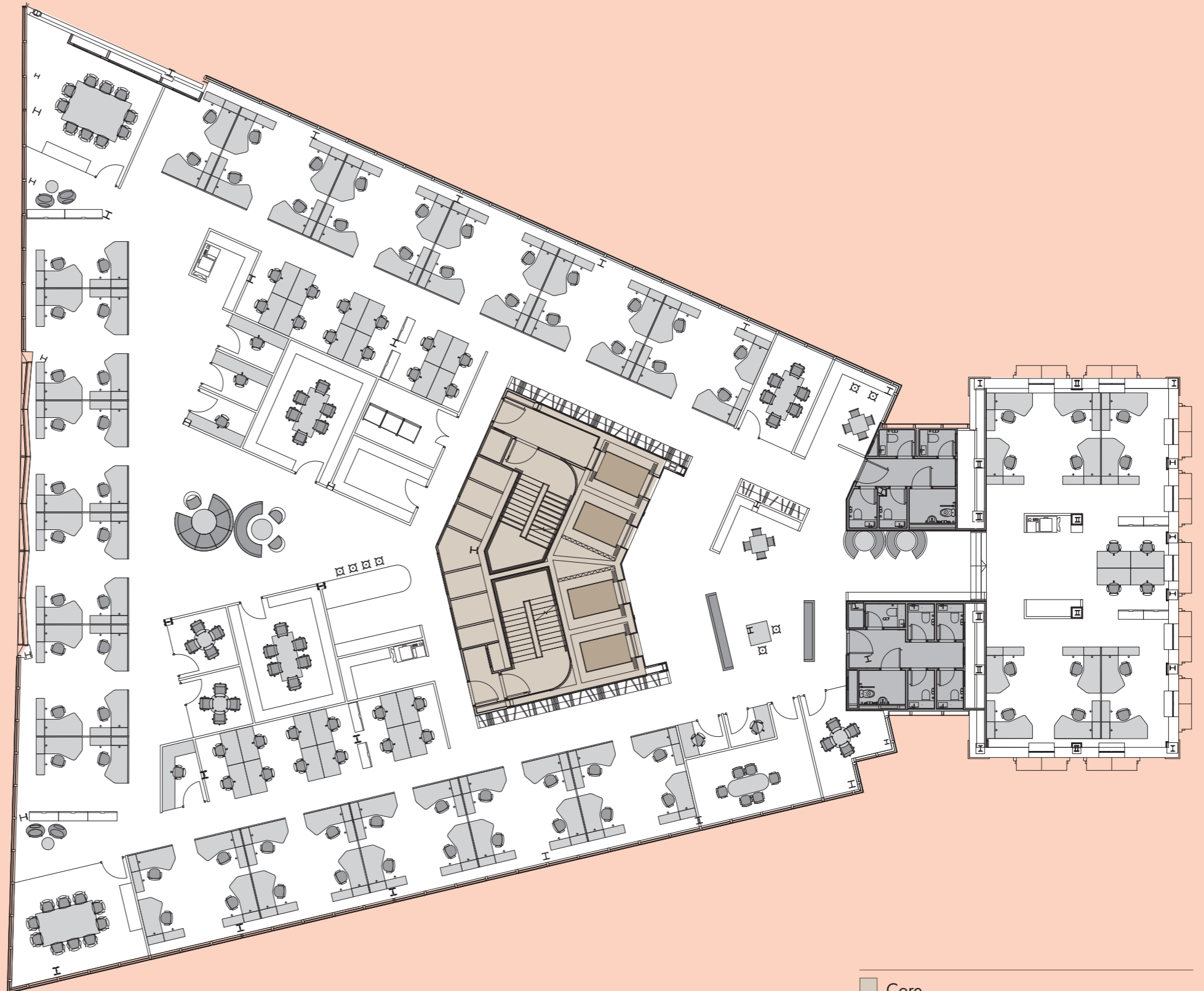
UK LEGAL (INDICATIVE LEVEL 5)

Density: 1:13

Headcount: 102 people

HEADCOUNT	
OPEN PLAN FEE EARNER	74
FEE EARNER WORKSTATIONS	74
ADMINISTRATIVE ASSISTANTS	20
PARA LEGAL POSITIONS	8
TOTAL	102

MEETING ROOM	ROOM	SEATS
4 SEATER MEETING ROOM	3	12
6 SEATER MEETING ROOM	1	6
10 SEATER MEETING ROOM	2	20
6 CASE ROOM	2	12
TOTAL	8	50



 Core
 Office
 WCs

Space plans not to scale.
For identification purposes only.
Subject to survey upon PC.